

The Morwell Post

Morwell Historical Society

URL: www.morwellhistoricalsociety.org.au

Email: secretary@morwellhistoricalsociety.org.au

 <https://www.facebook.com/morwellhistoricalsociety/>



Mrs Marion Alliss and daughter Charlotte in front of the Alliss homestead
Morwell Bridge c.1890
Early Victorian Home



See article page 10

IN THIS ISSUE

Directory	Page 2	McLean Street and Kelly Street	Page 8
President's Report	Page 3	Postage Stamp Booklet 1957	Page 9
Vale - Keith James Brownbill OAM (1927-2024)	Page 3	What House is That?	Page 10
Our Collection - Antique Sewing Machine, Pie Funnels	Page 3	A Guide to Victoria's Housing Styles	Page 11
Morwell Football Club Reserves Premiership 1961	Page 4-5	Opening Times and Supporters	Page 12
Nissen Huts	Page 6-7		

Morwell Historical Society Directory 2024/2025

President:	Alan McFarlane Phone: 0448 430 394
Vice-President:	Shirley Prosser
Secretary:	Florence Butcher
Assistant Secretary:	Elaine Andrijczak
Treasurer:	Peter Butcher
Committee Members:	Rosalie Davey Rob de Souza-Daw Laurie Williams
Research Library:	12 Hazelwood Road, Morwell, Victoria 3840
Research Queries:	secretary@morwellhistoricalsociety.org.au
Public Access:	1st and 3rd Wednesday and last Sunday of each month, 11.00 a.m. – 2.00 p.m. Open - February to November
Members' Gathering:	Every two months on the 3rd Wednesday - commencing 21st February 2024, then April, June, August, October, at 2pm (informal get-together and afternoon tea)
Annual General Meeting:	3rd Wednesday of March each year
Membership Fees:	Due 1st July each year Single Member - \$25.00 Family Membership -Family living at the same address \$30.00 Application Forms available on our website for you to print and send. For a print copy of " The Morwell Post " - \$10.00 per annum
Editor:	email: morwellpost@morwellhistoricalsociety.org.au
Newsletter Team:	Fay Thompson, Elaine Andrijczak, Florence Butcher
Research Fees:	\$10.00 per hour or part thereof, and prices for photo prints on application and postage where applicable.
Facebook:	https://www.facebook.com/morwellhistoricalsociety
Postal Address:	12 Hazelwood Road, Morwell 3840 Victoria, Australia

Front page icon is of the old Post Office c1930 which was on the site of the old Commonwealth Bank, corner of Commercial Road and Tarwin Street.

All photos, unless indicated, are from our archives

PRESIDENT'S REPORT

We had our last Gathering of Members for the year recently, which was well attended and good discussions had...

Recent visits to the rooms included Maryvale Probus, Masonic Lodge and Morwell Bowling Club board. In addition, we are seeing more people coming to our Open Days which is great. The Committee have decided to retain our "Step Back in Time" cafe for Open Days and will review mid 2025.

A successful Bunnings BBQ on 19 October saw near \$1000 into Club funds to assist with our operational costs.

I thank members for their support of the BBQ and Cafe.

The Society will close for December and January, giving our hard workers a well earned rest.

Best wishes
Alan

VALE — KEITH JAMES BROWNBILL OAM

The Society acknowledges the recent passing of one of our members, Keith Brownbill OAM. Keith, a long time resident, educator and community stalwart made a significant contribution to Morwell. He will be sadly missed.



SOME OBJECTS IN OUR COLLECTION

Generously donated to the society by Sue Hateley (née Green)



Antique Singer model 20 Miniature/Child Sewing Machine, early 1900s
15cm H x 15cmL x 9cmW



5.8cm x 6.6cm
Vintage Pyrex Pie Funnel



Vintage "Pie Bird"
10cm x 6cm
White Half Chef with bowtie

Kitchen gadgets that are used to vent steam from pies to prevent the filling from bubbling out of the crust and causing a mess in the oven while they are baking

MORWELL FOOTBALL CLUB RESERVES PREMIERS 1961

DOUBLE PREMIERSHIP - a feat rarely accomplished!!

Latrobe Valley Football League GRAND FINAL at Yallourn Oval on Saturday, 30th September 1961

The August Newsletter gave an account of the Morwell Football Club Seniors “snatching Premiership victory from the jaws of defeat” in the dying moments of the Grand Final against Traralgon by 5 points, to win the Club’s first Premiership in the Latrobe Valley Football League.

EARLIER in the day - the Morwell Reserves had defeated Traralgon Reserves in the Grand Final curtain-raiser to the big match - with a win by 27 points.

So, this amazing achievement of a double premiership is a very proud record in the history of the “Tigers” Morwell Football Club.

After a very even first half in the Reserves Grand Final which saw Morwell in front by 2 points (Morwell 3.9 to Traralgon 3.7), the game turned physical in the third quarter with a few fiery moments. Morwell won the quarter and then, in the last quarter, went on to win comfortably by 27 points, 11.15. 81 to 7.12. 54.

Reserves Coach John Brereton, originally from Cohuna, who played 17 games for Footscray Football Club in the years 1959 and 1960, was recruited from Footscray to play Seniors for Morwell and be coach of the Reserves. Amazingly, he was not only victorious as 1961 Reserves Coach. He then “lined up” on the day to play in the Seniors team which won the 1961 Latrobe Valley Football League Premiership.

Brereton, said at the Morwell Shire Council Civic Reception held after the games, “I’m the luckiest chap in Morwell. It wasn’t often that a fellow coached a Seconds team to a Premiership and then played in a Senior Premiership on the same day”.

Shire President, Cr Les Hare said at the Civic Reception he offered to the two teams held that evening in the Morwell Town Hall, “Traralgon thought they’d taken a spoke out of ‘The Hub’, but you boys added two more”!

Note: Cr Hare is reputed to have “branded” Morwell township as “the Hub of the Valley”.

Morwell Tigers President, Jack Walsh said “Two years ago Morwell won the Wooden Spoon. Today’s effort was not a bad one!” That must be the understatement of the year!

After the Civic Reception, a Grand Final dinner was sponsored by local businessmen for over 160 people. Mr. Gary Ord from 3TR was the Master of Ceremonies.

At 8.30pm the tables were cleared away to allow for the public to enter the Town Hall for the Grand Final night social and soon the hall was overflowing with happy supporters.



SOURCES: “The Advertiser”, Monday, 2nd October 1961 (State Library of Victoria)
Interview – Darrell White, OAM, 27th October 2024

MORWELL FOOTBALL CLUB RESERVES PREMIERS 1961



Back row: Alan McPhee (Trainer), Gordon Nelson, Daryl Kettles, Neville Bond, Bill Anderson, Lew Knowles, Vin Hourigan, Wally Hicks, Darrell White, Col Green (Manager)

Centre: Colin Wells, Geoff Philip, Alan Ripper, John Brereton (Coach), Norm Trembath (Captain), John Lestrangle

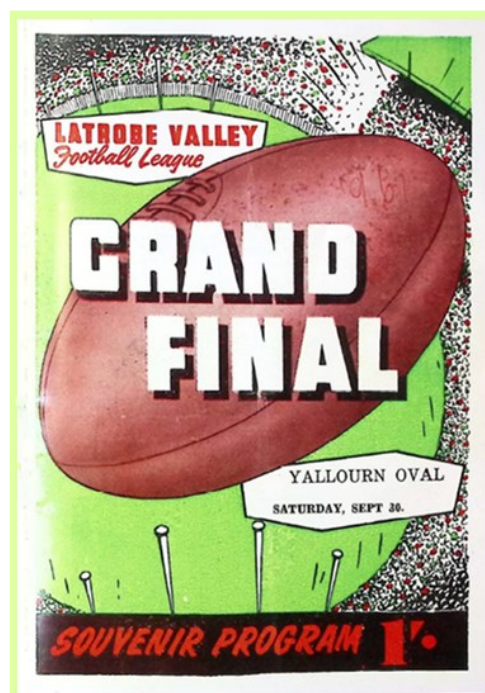
Front row: Ron Waller, Graham Ough, Colin Mahoney, Don Rogers, Russell Peachey, Alistair Blair, Phil Higgins

Best players: Gordon Nelson (best afield), Colin Mahoney, Colin Wells, Bill Anderson, Alistair Blair, Russell Peachey

Goals: Gordon Nelson 6, Ron Waller 2, Russell Peachey 1, Alistair Blair 1, Neville Bond 1

The Society has a copy, courtesy of Darrell White, of the 'Follower' Souvenir Program, which cost 1/- (one shilling), - the 36 pages comprise interviews, a review of the past season and a comparison of statistics with previous seasons.

The Society has copies available at our rooms – our Open Days are 11am to 2pm on the 1st and 3rd Wednesdays and last Sunday of the month (February to November)



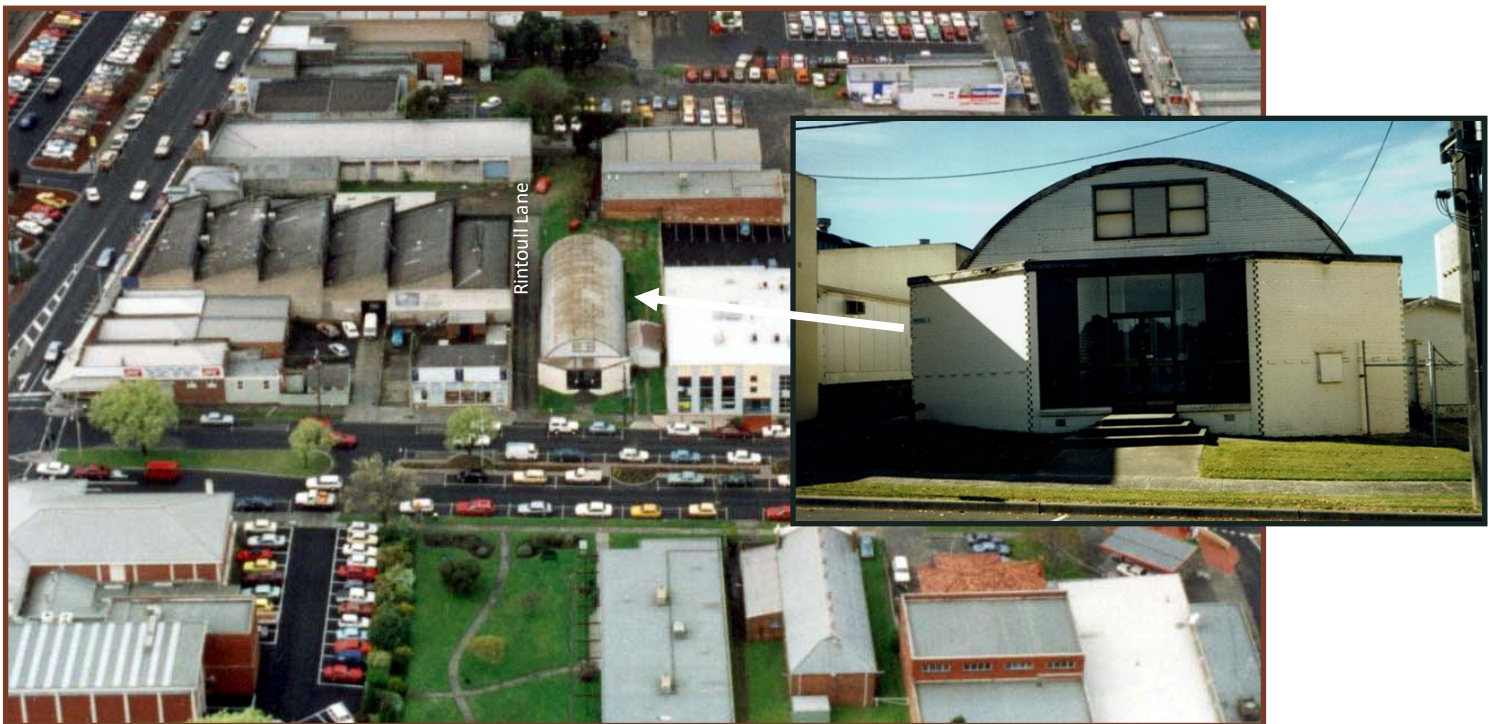
NISSEN HUTS

The Nissen Hut is a prefabricated steel structure originally for military use, especially as barracks made from a 210 degrees portion of a cylindrical skin of corrugated iron. It was designed during WW1 by a Canadian-American-British engineer and inventor Major Peter Norman Nissen. It was used extensively during WW2.

There was a Nissen Hut built in 1956, in Hazelwood Road, South of Rintoull Lane which was known as the API Hall (Australian Postal Institute). When the new Court House was built in 1957 there was no provision for when the County Court visited the circuit, so the Magistrates Court sat in the API Hall. Eventually a second room was built on the side of the Court House.

One of the Society members remembers an Art Show being held in the Hall, another member remembers going for a meal there.

There may be other Nissen huts in Morwell that we don't know about, are not publicly known or inaccessible.



Below, Nissen hut in Driffield Road





Morwell Briquette factory site - Nissen huts, storage. 17/4/1951



Latrobe City Municipal Pound, Driffield Road Morwell, currently used for storage. It's believed the hut may have been used by the Red Cross during the War years. Below image shows the original doorway and window on the north side.



McLEAN STREET and KELLY STREET

Allan McLean was born in 1840 in Oban in Scotland and came to Australia in 1842 with his family. His father Charles McLean was a grazier near Tarraville. About 1870 Allan and his brother Norman acquired the lease of "The Lowlands" sheep station on the shores of Lake Wellington, near Sale.

With his brother Norman, he formed in 1872 a highly successful stock and station agency, A McLean and Co. in Maffra. Branches were established in Traralgon, Bairnsdale, Warragul, Mirboo, Morwell and Melbourne. The success of his enterprise owed much to his inimitable reputation as an auctioneer. His eldest son William was later a senior partner in the firm.

Percy Kelly was the Morwell manager for 46 years. The office was on the north side of Commercial Road.



Alan McLean (1840-1911)



Percy Kelly (1882-1969) c1920 in the office doorway
207 Commercial Road, Morwell

Percy was the Chairman of the Morwell Waterworks Trust for many years and father of Brian, Kevin, Des, Frank, Alison and Don.

Allan McLean was elected to the Victorian Legislative Assembly for Gippsland North in 1880 and he was promoted to cabinet in 1890.

In 1899 Allan McLean replaced George Turner as Premier of Victoria but was defeated in the next general election. He entered the new Federal Parliament in 1901 as a member for the Protectionist Party. He lost his seat in the 1906 election.

Allan McLean's house "Duart" in McLean Street Maffra is now a function centre.

Duart Castle, on the Isle of Mull in Scotland, was the seat of the Clan McLean.

Allan McLean died in 1911 at his home in Albert Park and his body was taken to Sale Cemetery where he lies among 61 of his ancestors and descendants.

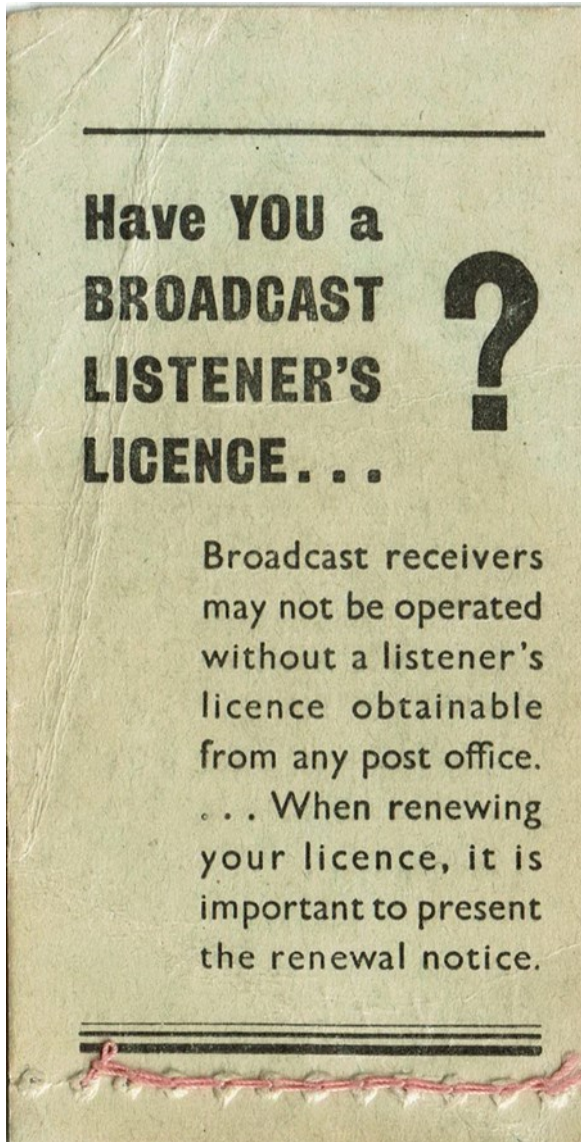
Patrick Percy Kelly died in 1969 and is buried in Hazelwood Cemetery.



This photo of McLean's house that is hanging in "Duart" was taken by Fay Thompson 2023

POSTAGE STAMP BOOKLET - 1957

Recently one of the Society's members donated an interesting booklet of Australian stamps. The Queen's Coronation was 2 June 1953 and this booklet of fourpenny stamps was issued on 13 March 1957

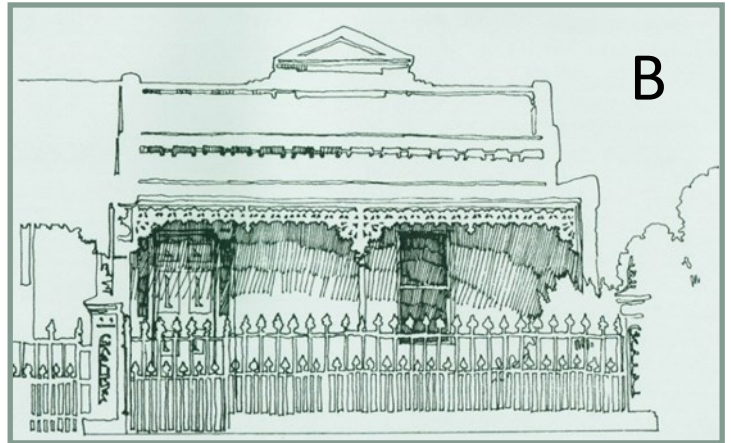


A Radio Broadcasting Listener's Licence was introduced in the 1950s as it was required under law until the 1970s, the fees from which went to funding public radio stations.

Radio and television licences were abolished by the Whitlam Government in 1974.



WHAT HOUSE IS THAT?



A guide to Victoria's housing styles

- A Early Victorian 1840-1860** Australian houses built between 1840 and 1860 were relatively simple, whether terraced or free standing. Usually sited close to the footpath, they have one or two rooms across the front with one room often projected forward in free standing houses. Their appearance is formal but plain, with simple or no verandahs and restrained ornamentation.
- B Mid Victorian 1860-1875** While retaining a similar form to its earlier Victorian precursors, this era of house design is distinguished by a greater level of ornamentation. There is an increased use of stucco on exterior surfaces, while decorative brickwork is prevalent in fashionable houses of the period. Verandahs, particularly those with timber frames, are common and often incorporate cast iron lace work and patterned tiled floors.
- C Late Victorian Boom Style 1875-1892** As wealth and confidence increase, houses still resemble earlier Victorian types in form, but assume a much grander, ornate appearance incorporating elements of the Italianate and filigree styles. Freestanding houses usually have one projecting room while terraces have a flat front wall but tall ornamented parapets and projecting wing walls at each end of the verandah. Both types, but particularly terrace houses, are sited fairly close to the street.
- D Queen Anne 1895-1910** Derived from English and American styles that revived elements from the architecture of Queen Anne's reign (1702-14), these picturesque houses are deliberately complex, creating a kind of vigorous grandeur. Most are freestanding and set well back from the street, but terraced versions do exist. Plans invariably have one room projecting forward, often with others projecting sideways from the main body of the house.
- E Edwardian 1901-1916** Also known as Federation style, houses built at this time draw on both Victorian and Queen Anne features. They follow a similar plan to Victorian houses, but are set further back from the street. Many Mid-Victorian ornaments are still used, but houses are less grand than in the Boom Period, due to the impact of the depression in 1892.
- F Californian Bungalow 1910-1930** With variants that include Indian and Tudor Revival as well as the Californian original, these rugged and cosy looking houses combine Arts and Crafts concepts with the ideal of the simple house in a natural setting. More rustic than preceding style Although the influence of a number of decorative styles such as Spanish Mission, most are single story with a simple L shaped plan and set well back from the street.
- G Early Modern 1930-1940** After the Great Depression of the 1930s, single story detached houses predominate. Set well back from the street on fairly large blocks, they exhibit a simplicity of style that reflects both economic stringency and the move towards modernism. Building forms are simple and fairly austere with limited embellishment, Although the influence of a number of decorative styles such as Spanish Mission, Georgian Revival and Art Deco is apparent.
- H Modern 1945-1970** Modernism in 20th century architecture is broadly characterised by open planning and simplicity with bold geometric shapes and little or no ornamentation. At the time, modern architecture was actively encouraged by young avant-garde architects. The style is principally distinguished by having almost nothing in common with traditional houses.

Source: *What House is That? A guide to Victoria's housing styles* A Joint Project between Heritage Victoria and the Building Commission to celebrate the Year of the Built Environment 2004, and our built heritage



OPEN DAYS 2024

7th February || 21st February || 25th February
 6th March || 20th March; AGM || 31st March
 3rd April || 17th April || 28th April
 1st May || 15th May || 26th May
 5th June || 19th June || 30th June
 3rd July || 17th July || 28th July
 7th August || 21st August || 25th August
 4th September || 18th September || 29th September
 2nd October || 16th October || 27th October
 6th November || 20th November || 24th November

Members' Gathering: Every two months on the 3rd Wednesday - commencing 21st February 2024, then April, June, August, October, at 2pm (informal get-together and afternoon tea)

Please deliver me to:

If not delivered please return to 12 Hazelwood Road, Morwell 3840

Articles and contributions to the Morwell Historical Society "Morwell Post" are welcome from any source without liability, and accepted subject to editorial approval. The editors reserve the right to amend/edit all contributions. The editor of the "Morwell Post" cannot be held responsible for the quality and accuracy of all information supplied to us. Readers should always check with originators of material published, with any queries relating to accuracy of information. All rights reserved. No part of this publication may be reproduced, stored in a retrieval system or transmitted in any form, or by any means, electronic, mechanical, recording or otherwise without the prior consent of the publisher.



CWA Morwell Evening Branch

We sincerely thank Harriet Shing, Member for Eastern Victoria and staff for printing our Newsletter