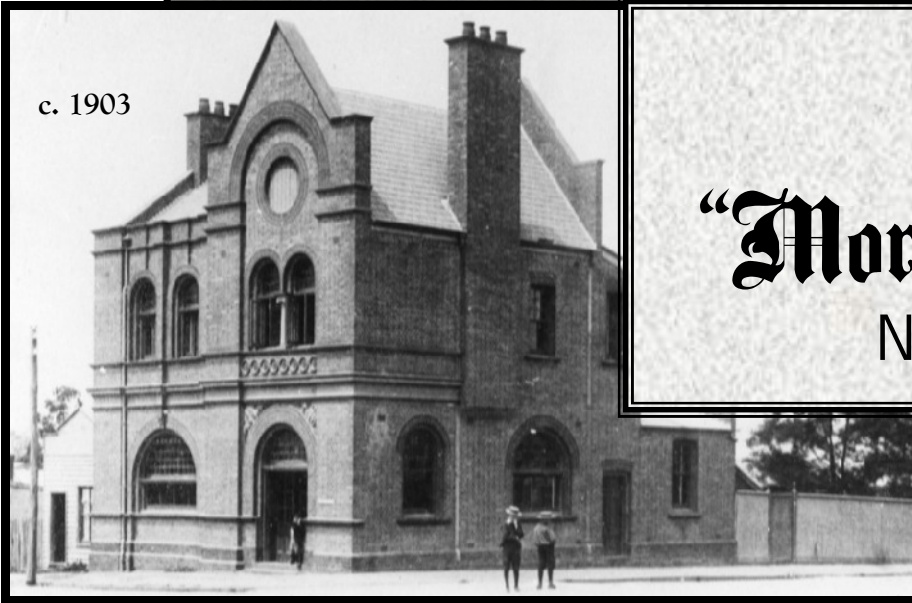


# Morwell Historical Society Inc.

Website: [www.LVonline.com.au/morwellhistoricalsociety.htm](http://www.LVonline.com.au/morwellhistoricalsociety.htm)

c. 1903



## The

AOO 16986W

# “Morwell Post”

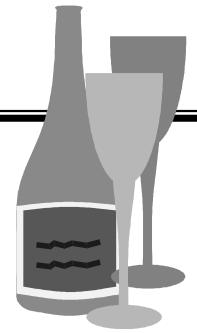
November 2002

Vol. 19 No.6

Secretary: Elsie McMaster  
2 Harold Street Morwell  
Tel: 5134 1149

Compiled by: Stephen Hellings

## Annual Dinner Report By Elsie McMaster



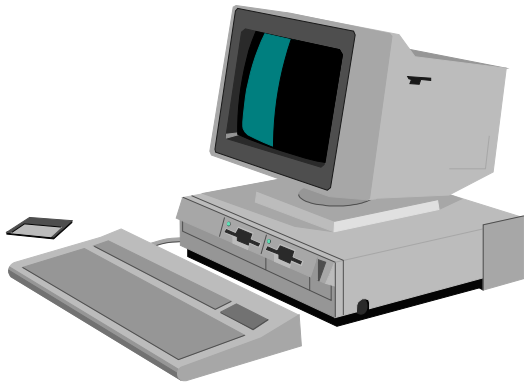
Morwell Golf Club was the venue for the Society's Annual Dinner on October 15<sup>th</sup>. After a most enjoyable meal, a small but appreciative group of members, friends and visitors from other Societies took a trip down 'memory lane' with guest speaker, local estate agent Mr. Keith Williams.

Keith's father started a real estate business in Morwell in 1941 and Keith took over in 1945, after his father's death. Since then he has seen the development of the power and paper industries, the building boom of the fifties and sixties, the expansion of the commercial and industrial sectors of the town and its surrounding districts and the social changes which have accompanied the growth of Morwell.

He and his business associates have been at the centre of many of these developments. As he says, he "can look at nearly every street in the town, and there's a memory there".

Keith's reflections and reminiscences brought back memories to many of the audience as he recalled characters and incidents from his business and social activities and gave us a fascinating overview of Morwell's development over the past half century.





## Grants For Computer Accessories (By our special correspondent)

The Society has received notice of a Community Grant of \$300 from Latrobe Council for the purchase of a new scanner for use with our computer.

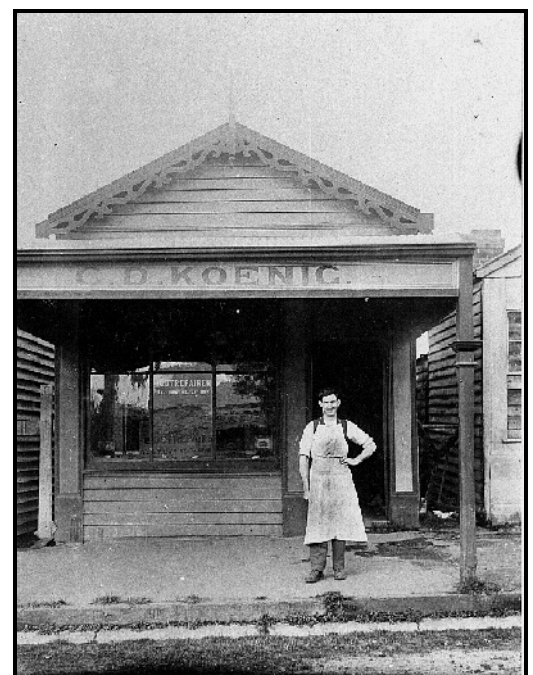
The scanner we have at present needs extensive repairs- it was used to scan almost all the Society's photo collection (over 3,000 photos)- and it was decided that it would be more economical to buy a new one.

We also recently received a further \$300 from Council for the purchase of a printer for the computer. The Society is grateful to Latrobe Council for their support and the new equipment will shortly be in use in our rooms.



*Proudly supported by Latrobe City Council*

## Some Samples From Our Collection Of Photographs



# HELP!

## Information Required Please

### Mountain Hut Hotel

Any information on the above would be gratefully received.

The Mountain Hut Hotel existed near Delburn in the late 19<sup>th</sup> and early 20<sup>th</sup> centuries. We would like to know its exact location, any information on ownership, and would be most interested to know if anyone has a photo or sketch.

Thank You



## Happy Holidays!



The Executive and Committee of the Morwell Historical Society Inc. would like to wish all our Members a very Merry Christmas and a safe and prosperous New Year.

The next edition of the "Morwell Post" will appear in January 2003.

For details of our next meeting please refer to back page.

Stephen



## Hazelwood Ridge School No. 1768.

This school was established in **October 1876** and was the first school in the Morwell District. Schools Inspector Holland estimated that the initial enrolment would be approximately 36 children. The families expected to benefit from the school were: **Firmin, O'Hara, Amiet, Applegate, Geale, McGauran, Johnston, Heesom** and **Richards**.

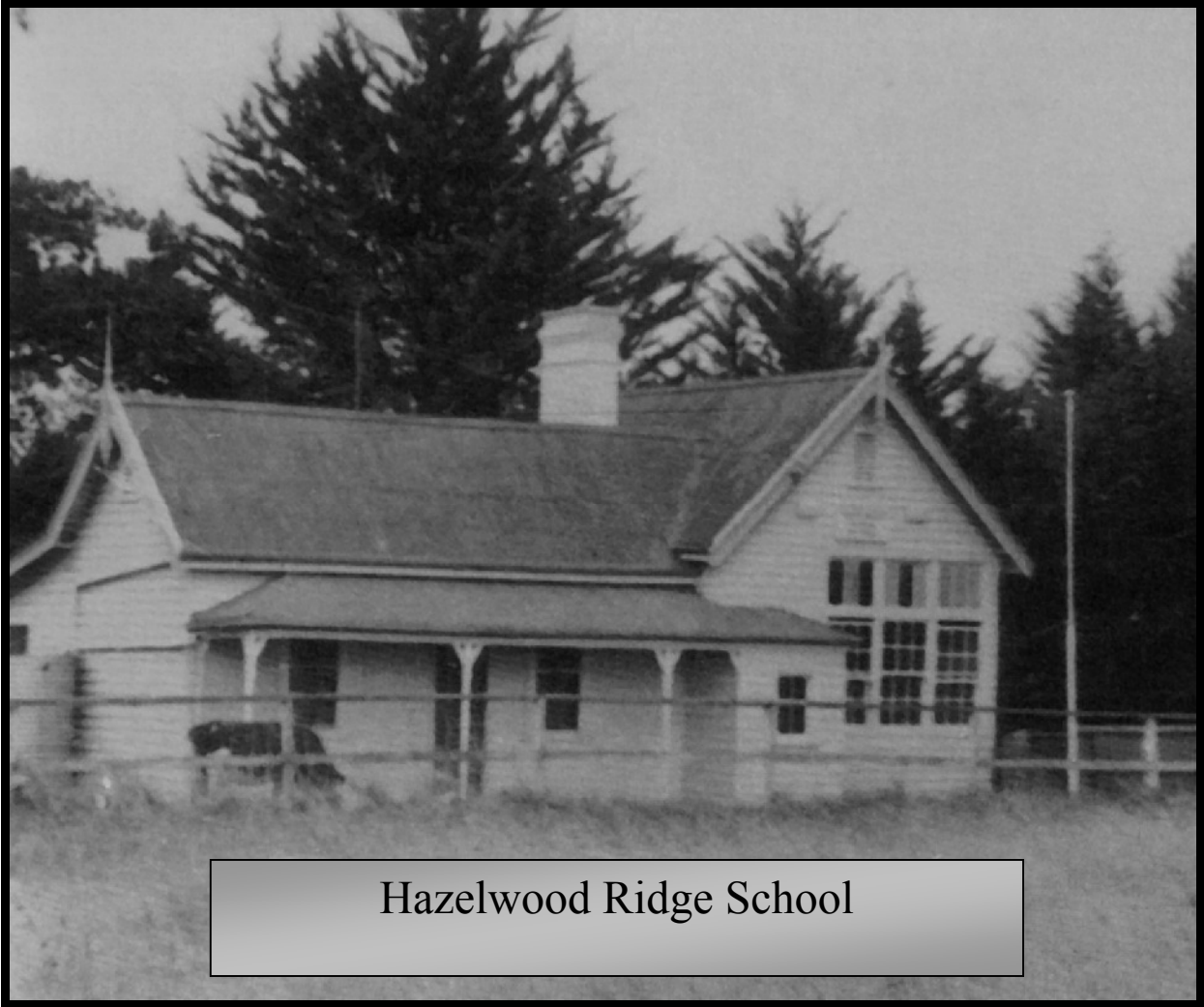
The building was constructed of wattle and daub and was white washed inside and out, it measured 36 feet by 18 feet. The structure was partitioned to allow for the teacher's apartment. The roof consisted of sawn ironbark shingles. The whole building cost £ 52-9-0. The builder was Mr. Heesom; he received the sum of £ 6 from the Education Department in recognition of his labours.

After the establishment of schools in Morwell and Yinnar the school at Hazelwood Ridge suffered a significant drop in enrolments and was forced to operate on a half-time basis with Yinnar South in 1894-1898 and with Driffield in 1902-1908.

The school at Yinnar south was destroyed by the bushfires that ravaged the area in 1898; in 1908 Driffield School suffered a similar fate. As a consequence the school enrolment rose from 18 to 28. Hazelwood Ridge returned to full-time status between the years: 1898-1901, and again from 1908 until the school was officially closed in **December 1944** due to an insufficient number of pupils.

The old school site is now covered by Hazelwood Pondage.





Hazelwood Ridge School

## **Morwell Advertiser**

5th. March 1953

# **Electric Train Service for Gippsland.**

An electric train is to test the first six mile section completed in the £5¼ million plan to electrify the main Gippsland railway line from Dandenong to Traralgon. This stretch is 77 miles long and the Moe-Yallourn spur, 7 miles long, is to be electrified also.

The Chairman of Railway Commissioners, Mr. G. Wishart, said this week that on Thursday the new 24,000 h.p. locomotive would be given a high speed test on the section.

Engineers would ascertain whether it could take current from the overhead cable at 60 m.p.h.

Until the 25-mile section between Warragul and Dandenong was completed electric trains would not take over the service. Cable was being laid at the rate of one mile per week.

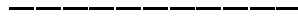


# Advertiser

## Morwell Petty Sessions.

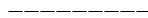


THURSDAY, JUNE 20, 1901



(Before Mr C. A. Creswell, P.M. and Messrs Vary, Edney and Hall, J's P.

### OBSTRUCTION ON ROADWAY.



P. J. Gorman, police constable residing at Morwell, proceeded against J. Watson for leaving an obstruction, in the shape of a dray, on the road, on the night of 18<sup>th</sup> April, without a light being attached.

The Constable stated that on the evening of 18<sup>th</sup> April defendant started home from Morwell with a dray load of manure, but whilst going up the Ridge cutting the dray broke down. Defendant then returned to Morwell and asked him if it was necessary to put a light on the dray. He (witness) said "yes", and told him to remove it first thing next morning. Defendant, however, did not put a light on the dray, and left it on the road all next day. At 8 p.m. on the 19<sup>th</sup>, he in company with defendant removed the obstruction. The cutting at the place is 18ft wide and 5 ft deep, and there was scarcely room for a vehicle to pass.

G. Billingsley, carrier, gave evidence that he had some difficulty in passing the dray with a load of timber. There, however, was plenty room for a vehicle to pass.

A. Green, draper's assistant deposed that he heard Constable Gorman tell defendant, on the night of 18<sup>th</sup> April, to put a light on the dray and remove it first thing next morning. Defendant stated the dray broke down in consequence of the tyre coming off a wheel. He admitted having failed to carry out the Constable's instructions, but said the dray was on the side of road, and there was plenty room to pass. The P. M. said it was a dangerous thing to leave a dray in a cutting at night, without a light. - A fine of 20/ was imposed.



# From the Classifieds...

**John Bolger**

**Funeral Director**

FOR ECONOMICAL ESTABLISHED  
SERVICE OF 30 YEARS.

Cnr. BUCKLEY & CHURCH STS.,  
MORWELL. Phone No. 1.

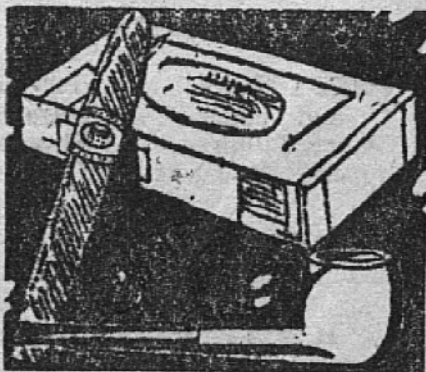
**A. A. GREEN**

TARWIN STREET - MORWELL.

Drapery            Clothing  
Boots                Shoes

Radio and Electrical Goods.  
All Makes of Radio Sets Repaired

P.O. Box 4    MORWELL    Phone 5.



**Pop in for SMOKES**

All the called for brands of  
CIGARETTES and TOBACCOS  
stocked—

**G. P. EVANS**

NEWSAGENT & FANCY GOODS.  
MORWELL. 'Phone 50.

**G. A. Miles**  
Building Contractor

PLANS and ESTIMATES SUBMITTED.

Shop Fittings, Renovations, Country  
Work.

BOX 99, COMMERCIAL RD., MORWELL

**W. N. Shaw**

**Cartage Contractor  
and Fuel Merchant**

23 COLLINS ST., MORWELL.

**MR. VERMISH**

CONCERT AND CONSERVATORIUM  
PIANO TUNER AND PIANO PLAYER  
EXPERT.

Orders left with Gippsland Furnishers,

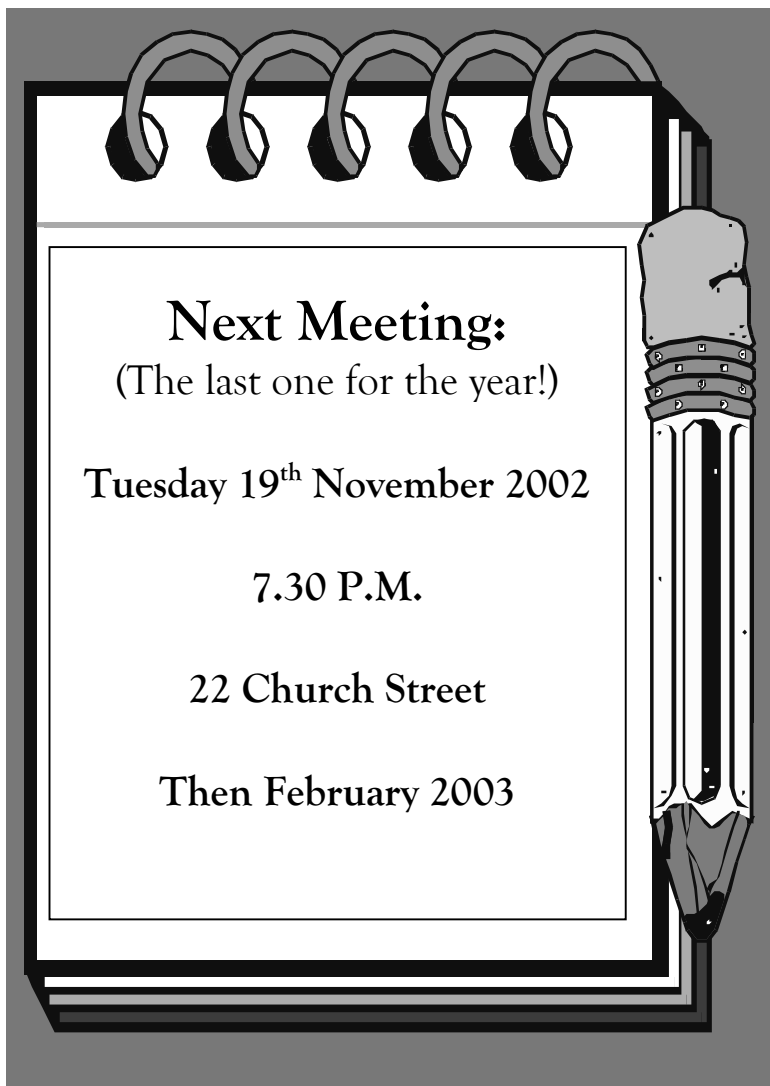
**T. TWOMEY**  
HAIRDRESSER

Commercial Rd., Morwell.

**LOUIS BOND**

GENERAL CARRIER AND WOOD  
MERCHANT

Station St., Morwell.



## Next Meeting:

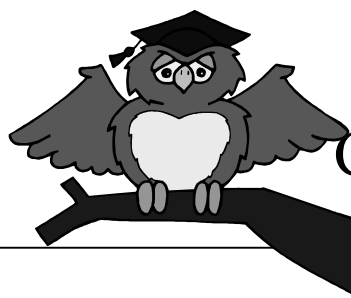
(The last one for the year!)

Tuesday 19<sup>th</sup> November 2002

7.30 P.M.

22 Church Street

Then February 2003



## Quiz Corner ??

Who was elected as the first Morwell Shire President in 1892?

- A. Walter Edney
- B. Donald Shaw
- C. John English
- D. Samuel Vary
- E. John Hall
- F. Edmond Kelleher

Answer to September's Guess Who:

**Mr. John Barton HOYLE.**

## From Our Historical Diary: November:



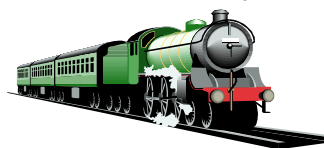
Driffield School opened in 1881

Colonial Bank established in Morwell in 1884

Hazelwood Estate School began classes in 1926

## Did You Know That:

In 1888 it took four hours to travel to Melbourne by train!



Web Site: (Courtesy of Claassens Computers Morwell)  
[www.LVonline.com.au/morwellhistoricalsociety.htm](http://www.LVonline.com.au/morwellhistoricalsociety.htm)